

KOBELCO

SK260SRLC-3/SK260SRNLC-3

SK260SRLC

SK260SRNLC



- Bucket Capacity:
0.51 - 0.93 m³ ISO heaped
- Engine Power:
124 kW/2,000 min⁻¹ (ISO14396)
- Operating Weight:
24,900 kg - SK260SRLC
24,800 kg - SK260SRNLC

Complies with the latest exhaust emission regulations



US
EPA Tier IV



EU (NRMM)
Stage IIIB



Japanese
Regulations

We Save You Fuel
Achieving a Low-Carbon Society

Powerful, Agile and Quiet.

New performance Capacities with a Small Rear Swing

The rounded form says it all: an excavator built with a tiny rear swing for maximum maneuverability. But KOBELCO has taken this concept one step further by seeing just how much digging performance can be packed into a machine. It is not the compact design that matters so much as the performance and functions that are actually used on site. And that's just where the new SR Series really shines, thanks to our NEXT-3E concept. Thanks to key iNDr technology, we've realized a whole new level of quiet operation, backed by a next-generation power plant that pushes performance to extraordinary new heights. Ten years after developing groundbreaking machines with tiny rear swings, KOBELCO continues to forge ahead as the leader in the field.



Pursuing the "Three E's"

The Perfection of Next-Generation,
Network Performance

Enhancement

Greater Performance Capacity

Economy

Improved Cost Efficiency

Environment

Features That Go Easy on the Earth



Amazingly Quiet!

Effective Dust Protection!

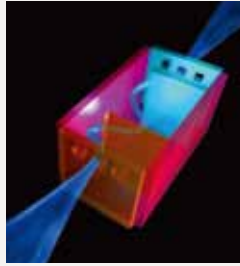
**Remarkable Ease of
Maintenance!**





Image illustrates iNDr system

The iNDr Revolution



●Concept

KOBELCO has developed the revolutionary integrated Noise and Dust Reduction Cooling System, with the engine compartment placed inside a single duct that connects the air intake to the exhaust outlet.



●Reduces Noise

The intake and exhaust are offset, with the holes and joints in the sections corresponding to the duct wall completely covered to reduce noise at the intake and exhaust apertures. This design, plus the generous use of insulation-material inside the duct, minimizes engine noise.



●Reduces Dust

The high-performance iNDr filter removes dust from intake air, ensuring a quieter, cleaner engine and keeping the cooling unit free of clogging so that no regular cleaning is necessary.

iNDr Filter

Far Surpassing Legal Requirements

The SR series has broken through to a new frontier in quiet operation, with a noise level a full 5 dB below the Japanese government's requirements for ultra-low-noise machinery. In fact, compared with previous KOBELCO models, we have achieved a 10 dB reduction on the right-side surface of the machine, a difference that is clearly audible.



“Ultimate”-Low Noise Level of
95dB(A)

More Work with Less Fuel!

Fuel Consumption and Work Volume

The new hydraulic system and an additional ECO-mode have cut fuel consumption by up to 20%.

H-mode (vs previous SK235SRLC in H-mode)

Fuel consumption (L/h)

 **8 % decrease** 

Work volume per liter of fuel (m³/L)

 **6 % increase** 

S-mode (vs previous SK235SRLC in H-mode)

Fuel consumption (L/h)

 **5 % decrease** 

Work volume per liter of fuel (m³/L)

 **5 % increase** 

ECO-mode (vs previous SK235SRLC in S-mode)

Great leap forward in energy-saving performance

Fuel consumption (L/h)

 **20 % decrease** 

Work volume per liter of fuel (m³/L)

 **9 % increase** 

* Figures for fuel consumption: fuel consumed per hour (L/h) compared with previous model, in KOBELCO tests.

* Figures for work volume: digging volume per liter of fuel (m³/L) compared with previous model, in KOBELCO tests.

Significant Extension of Continuous Working Hours

The combination of a large-capacity fuel tank and excellent fuel efficiency delivers an impressive max. 19 % increase in continuous operation hours.*

 Fuel tank: **330 L**

ECO-mode

Work modes for a closer match to the job in hand. An addition to the existing H-mode and S-mode, the new ECO-mode saves even more energy.

**H
S
E**



H-mode: For heavy duty when a higher performance level is required.

S-mode: For normal operations with lower fuel consumption.

ECO-mode: Puts priority on low fuel consumption and economic performance.





**NEXT-3E Technology
New Hydraulic System**

Rigorous inspections for pressure loss are performed on all components of the hydraulic piping, from the spool of control valve to the connectors. This regimen, combine with the use a new, high-efficiency pump, cuts energy loss to a minimum.



**NEXT-3E Technology
Total Tuning Through Advanced ITCS Control**

The next-generation engine control is governed by a new version of ITCS, which responds quickly to sudden changes in hydraulic load to ensure that the engine runs as efficiently as possible with a minimum of wasted output.

ITCS (Intelligent total Control System) is an advanced, computerized system that provides comprehensive control of all machine functions.



**NEXT-3E Technology
Next-Generation Electronic Engine Control**

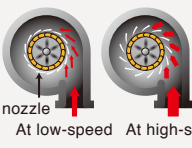
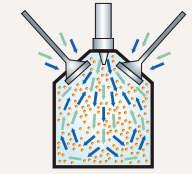
The new electronic-control common-rail engine features high-pressure fuel injection and multiple injection with improved precision. It is fitted with an EGR cooler, and DP filter which deliver high output from optimized combustion and greatly reduce PM and NOx emissions.



Tier 4-compliant engine

PM emissions cut: Limits creation of particulate matter (which results from incomplete combustion of fuel)

- **Common rail system**
High-pressure injection atomizes the fuel, and injection timing is more precise, improving combustion efficiency.
- **VG Turbo**
The variable-geometry turbocharger adjusts air intake to maximize combustion efficiency. At low engine speeds the nozzles are closed, the turbo speed increased and air intake is boosted. This helps lower fuel consumption.

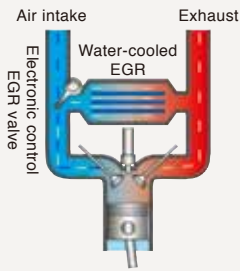


- **DP filter**
Carbon builds up as soot on the diesel particulate filter and is burned off at high temperature. At low engine speeds the exhaust temperature is too low, and the common rail multiple injection system is then used to raise the temperature sufficiently to burn off the soot.



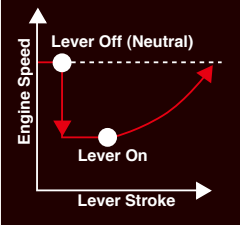
NOx emissions cut: Reduces nitrous oxides (created by reaction with oxygen at high temperature)

- **EGR cooler**
While ensuring sufficient oxygen for combustion, cooled emission gases are mixed with the air intake and re-circulated into the engine. The lowered oxygen temperature lowers the combustion temperature and increases combustion efficiency.



**Automatic Acceleration/Deceleration Function
Reduces Engine Speed**

Engine speed is automatically reduced when the control lever is placed in neutral, effectively saving fuel and reducing noise and exhaust emissions. The engine quickly returns to the previous speed when the lever is moved out of neutral.



Efficient Performance!

Top-Class” Powerful Digging

Max. arm crowding force: **102 kN** {10.4 tf}

With Power boost: **112 kN** {11.4 tf}

Max. bucket digging force: **143 kN** {14.6 tf}

With Power boost: **157 kN** {16.0 tf}

Powerful Travel

Travel torque: increase by **6 %**

Drawbar pulling force: **242.7 kN** {24.8 tf}

Optional N&B (crusher and breaker)

The operator selects the desired mode from inside the cab, and the selector valve automatically configures the machine accordingly.

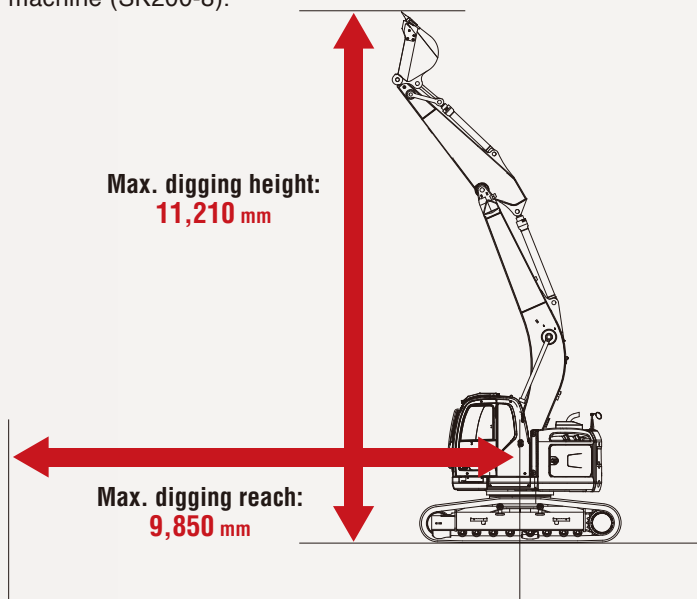
Attachment Mode Selector Switch

There's a choice of three different hydraulic circuits, to accommodate bucket, crusher or breaker, and the desired attachment mode can be selected with a switch, which automatically configures the selector valve. All attachment modes can be used in S-mode, H-mode and ECO-mode.



A Low, Solid Center of Gravity

Despite their new, heavy-duty attachments, these machines are more stable than their predecessors, resulting in wider working ranges and a digging height equal to or greater than full-sized machine (SK200-8).



Greater Swing Power, Shorter Cycle Times

Swing torque: **85.6 kN**
Swing Speed: **10.3 min⁻¹**

Requires 4.0 m of Working Space

The compact design allows the machine to perform continuous dig, 180° swing and dump operations within a working space of 4.0 m.



*Working width (180°) equals the sum of the minimum front swing radius and tail swing radius.

*Photos are the optional specs with add-on counterweight.

**Figure shows the value without add-on counterweight.

Mild Operating Sound

The iNDR cooling system also helps to keep the machine quiet, even at close quarters. Even the hydraulic relief valves have been designed specially to reduce irritating noise during operation.

Meets EMC (Electromagnetic Compatibility) Standards in Europe

Electrical shielding ensured that the machine s clear all European standards and neither cause or are affected by electromagnetic interference.

A Working Environment that Helps the Operator Concentrate

Big Cab



The “Big cab” provides a roomy operating space with plenty of legroom, and the door opens wide for entry and exit. As well as giving a wide, open view to the front, the cab has increased window areas on both sides and to the rear, for improved visibility in all directions.

**Photo is the optional specs with air suspension seat.*

Wide-Access Cab Aids Smooth Entry and Exit



Easy entry and exit assured with wider cab entry and safety lock lever integrated with mounting for control levers.



In-Cab Noise is Reduced by 5 dB

Compared with Previous Models



Multi-Display Color Monitor for Easy Checking

An LCD multi-display color monitor is fitted as standard. Operations data as well as the full range of machine-status data can readily be checked.



● Fuel consumption



● Maintenance



● Rearview monitoring

on the Job at Hand!



ROPS Cab



The newly developed, ROPS (Roll-Over-Protective Structure)-compliant cab clears ISO standards (ISO-12117-2: 2008) and ensures greater safety for the operator should the machine tip over.

- Level 2 FOPS Guard (ISO 10262) is available as option.
- To fit vandalism guards, please contact your KOBELCO dealer. (Mounting brackets for vandalism guards)

Safety Features That Take Various Scenarios into Consideration

- Firewall separates the pump compartment from the engine
- Handrails meet European standards
- Thermal guard prevents contact with hot components during engine inspections
- Retractable seatbelt requires no manual adjustment
- Travel alarm



●Rear view camera
A rear view camera is installed as standard to simplify checking for safety behind the machine. The picture appears on the color monitor.



●Hammer for emergency exit

Comfortable Operating Environment



●Double slide seat



●Powerful automatic air conditioner



●Two-speaker FM/AM radio with station select



●One-touch lock release simplifies opening and closing front window



●Large cup holder



●Spacious luggage tray

Fast, Accurate and Low-Cost Maintenance

Comfortable “On the Ground” Maintenance

All of components that require regular maintenance are laid out for easy access. Newly designed, the bonnet opens widely and at lower level. And in a new layout, equipment that requires maintenance is positioned in easily accessible locations. The servicing jobs can be completed from ground or in the cab.



- Easy access to cooling units

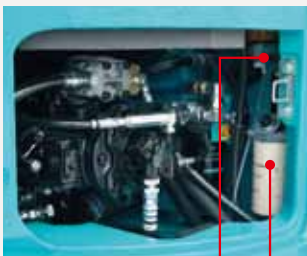
Left side



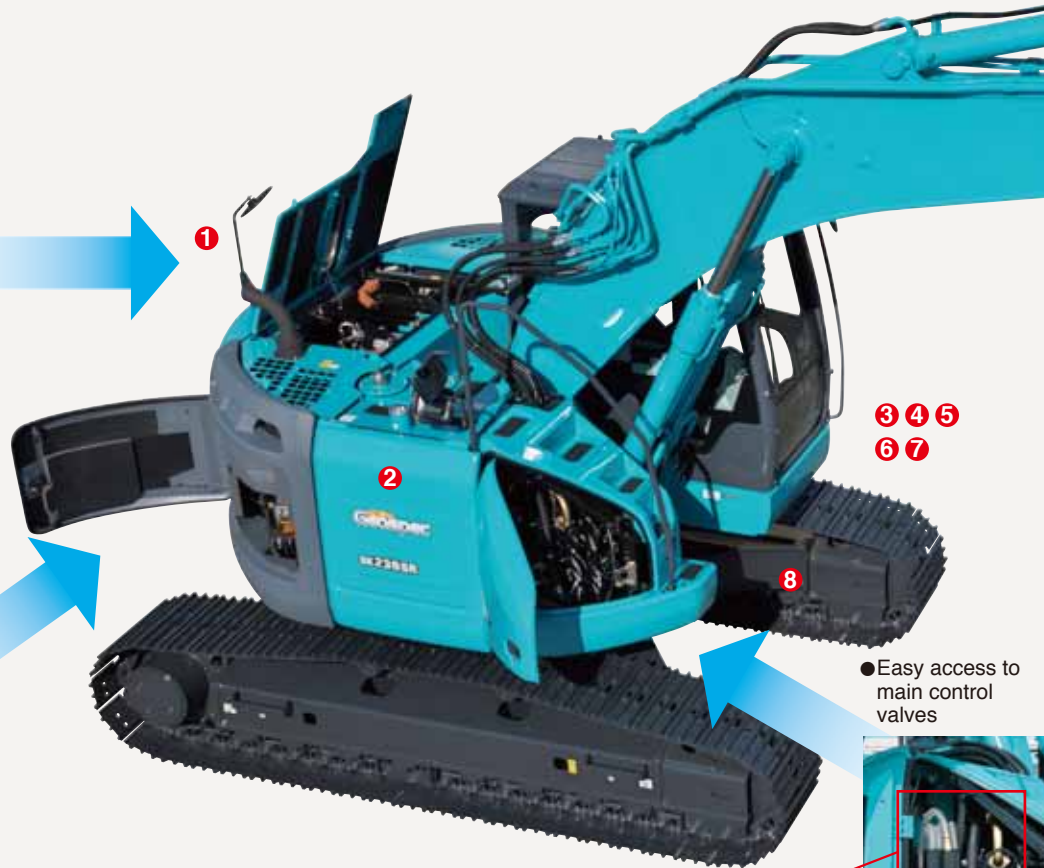
Radiator reservoir tank

- Easy access to pump

Right side



Fuel filter
Engine oil filter



- Easy access to main control valves



Refueling pump

Fast Maintenance



● Engine quick drain cock can be turned without tools.



● Fuel tank equipped with bottom flange and large drain valve.



● Hour meter can be checked while standing on the ground.



● Easy-access fuse box. More finely differentiated fuses make it easier to locate malfunctions.



● Washer fluid tank located under the cab floor mat.



● Detachable two-piece floor mat with handles for easy removal. A floor drain located under floor mat.

- Easy replaceable engine oil filter
- Starter easily replaced from the pump side



Control valve

Easy Cleaning



● Internal and external air conditioner filters can be easily removed without tools for cleaning.



● Special crawler frame designed is easily cleaned of mud.

iNDr Means Easy Maintenance

iNDr Filter Blocks Out Dust



Outside air goes directly from the intake duct through the iNDr filter for dust removal. The filter features a 60-mesh screen, which means it has sixty holes per inch both vertically and horizontally, with a wide front surface area accordion structure that resists clogging.



Visual Checking and Easy Cleaning



When checking and cleaning the cooling system, one must deal with several different components like the radiator, oil cooler and intercooler, which all must be handled in different ways. But with the iNDr filter, there's just one filter in one place. If it looks dirty during start-up inspection, it can be cleaned easily and quickly.

Long-Interval Maintenance



● Long-life hydraulic oil reduces cost and labor.

Super-Fine Filter



High performance, super-fine filter has a 1,000 hour replacement cycle.

● Super-fine filter

High-grade Fuel Filter with Superior Filtration Performance

The high-performance, large capacity filter is specially designed for a common-rail engine and features 2.9 times more filtering area than previous Filters.

Monitor Display with Essential Information for Accurate Maintenance Checks



- Displays only the maintenance information that's needed, when it's needed.
- Self-diagnostic function that provides early-warning detection and display of electrical system malfunctions.
- Record function of previous breakdowns including irregular and transient malfunction.

Choice of 16 Languages for Monitoring Display

With messages including those requiring urgent action displayed in the local language, users in all parts of the world can work with greater peace of mind.



Engine

Model	HINO J05E-TJ
Type:	Direct injection, water-cooled, 4-cycle diesel engine with turbocharger, intercooler (Complies with EU Stage IIIB and US Tier IV)
No. of cylinders:	4
Bore and stroke:	112 mm x 130 mm
Displacement:	5.123 L
Rated power output:	NET 124 kW/2,000 min ⁻¹ (ISO 14396: Without fan)
Max. torque:	NET 660 N·m/1,600 min ⁻¹ (ISO 14396: Without fan)



Hydraulic System

Pump	
Type:	Two variable displacement pumps + one gear pump
Max. discharge flow:	2 x 220 L/min, 1 x 20 L/min
Relief valve setting	
Boom, arm and bucket:	34.3 MPa {350 kgf/cm ² }
Power Boost:	37.8 MPa {385 kgf/cm ² }
Travel circuit:	34.3 MPa {350 kgf/cm ² }
Swing circuit:	27.0 MPa {285 kgf/cm ² }
Control circuit:	5.0 MPa {50 kgf/cm ² }
Pilot control pump:	Gear type
Main control valves:	8-spool
Oil cooler:	Air cooled type



Swing System

Swing motor:	Axial piston motor
Brake:	Hydraulic; locking automatically when the swing control lever is in the neutral position
Parking brake:	Oil disc brake, hydraulic operated automatically
Swing speed:	10.3 min ⁻¹ {rpm}
Tail swing radius:	1,720 mm
Min. front swing radius:	1,930 mm



Attachments

Backhoe bucket and arm combination

Use	Backhoe bucket					Slope finishing bucket	
	Normal digging						
						—	
Bucket capacity	ISO heaped m ³	0.51	0.7	0.8	0.93	0.8	—
	Struck m ³	0.39	0.52	0.59	0.67	0.59	—
Opening width	With side cutter mm	870	1,080	1,160	1,330	1,160	—
	Without side cutter mm	770	980	1,060	1,230	1,060	2,200 x 1,100
No. of bucket teeth		3	5	5	5	5	—
Bucket weight	kg	520	630	650	710	660	—
Combinations	2.4 m arm	○	○	○	◎	○	—
	2.94 m arm	○	○	◎	△	◎	△
	3.33 m arm	○	△	—	—	—	—

◎ Standard ○ Recommended △ Loading only



Travel System

Travel motors:	2 x axial-piston, two-step motors
Travel brakes:	Hydraulic brake per motor
Parking brakes:	Oil disc brake per motor
Travel shoes:	51 each side
Travel speed:	5.5 / 3.4 km/h
Drawbar pulling force:	242.7 kN {24,800 kgf} (ISO 7464)
Gradeability:	70 % {35°}



Cab & Control

Cab
All-weather, sound-suppressed steel cab mounted on the silicon-sealed Viscous mounts and equipped with a heavy, insulated floor mat.
Control
Two hand levers and two foot pedals for travel
Two hand levers for excavating and swing
Electric rotary-type engine throttle



Boom, Arm & Bucket

Boom cylinders:	125 mm x 1,320 mm
Arm cylinder:	135 mm x 1,558 mm
Bucket cylinders:	120 mm x 1,080 mm



Refilling Capacities & Lubrications

Fuel tank:	330 L
Cooling system:	24 L
Engine oil:	20.5 L
Travel reduction gear:	2 x 5.0 L
Swing reduction gear:	4.7 L
Hydraulic oil tank:	114 L tank oil level 230 L hydraulic system



Working Ranges

Unit: m

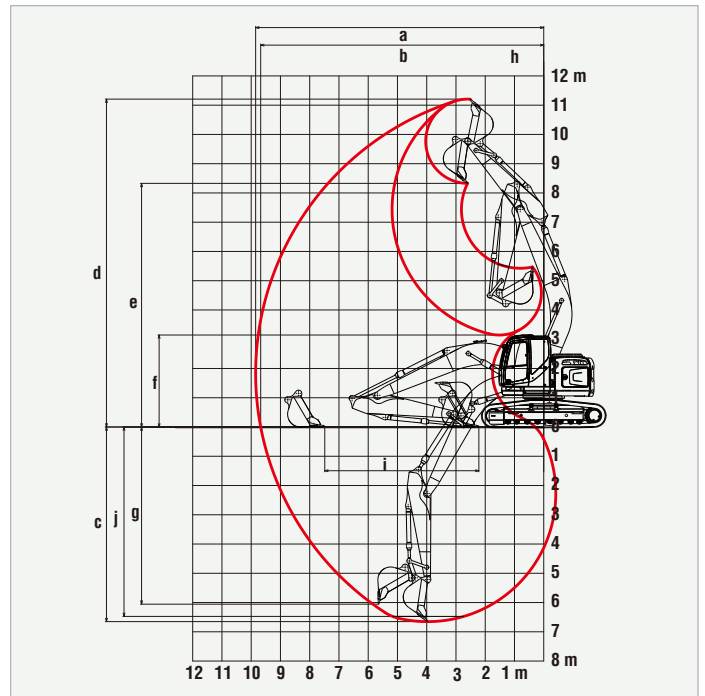
Range	Boom			
	Arm	2.4 m	2.94 m	3.33 m
a - Max. digging reach		9.37	9.85	10.24
b - Max. digging reach at ground level		9.18	9.68	10.07
c - Max. digging depth		6.11	6.65	7.04
d - Max. digging height		10.82	11.21	11.55
e - Max. dumping clearance		7.94	8.33	8.67
f - Min. dumping clearance		3.79	3.14	2.87
g - Max. vertical wall digging depth		5.52	6.06	6.66
h - Min. swing radius		2.18	1.93	2.37
i - Horizontal digging stroke at ground level		4.08	5.27	5.66
j - Digging depth for 2.4 m (8') flat bottom		5.91	6.47	6.88
Bucket capacity ISO heaped m ³		0.93	0.8	0.57

Digging Force (ISO 6015)

Unit: kN

Arm length	2.4 m	2.38 m	3.33 m
Bucket digging force	143	143	143
	157*	157*	157*
Arm crowding force	121	102	95.6
	133*	112*	105.3*

*Power Boost engaged



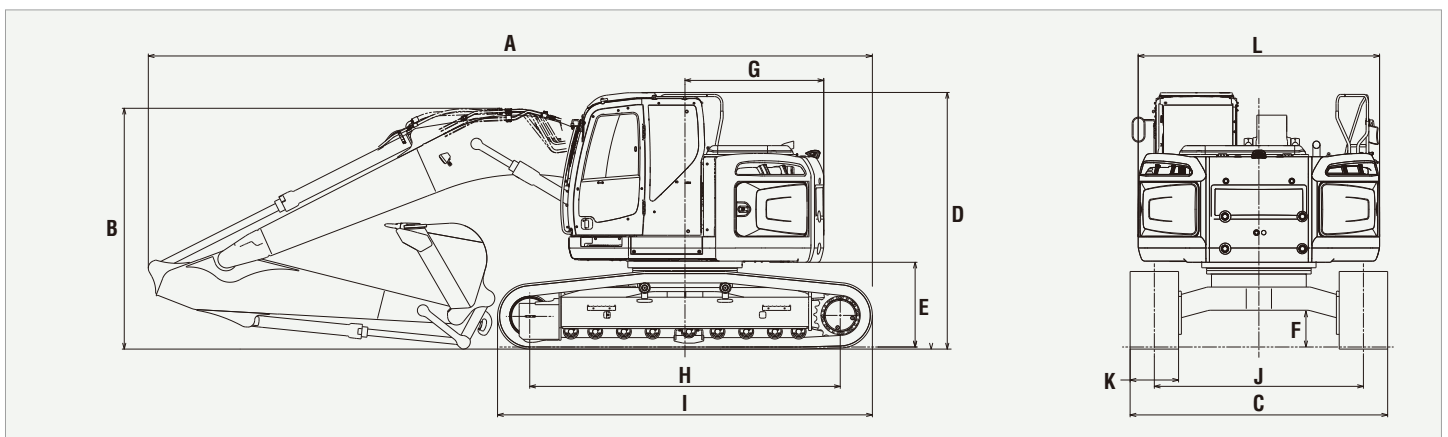
Dimensions

Arm length		2.4 m	2.38 m	3.33 m
A	Overall length	9,070	8,970	9,040
B	Overall height (to top of boom)	3,160	2,980	3,430
C	Overall width of crawler	SK260SRLC	3,190	
		SK260SRNLC	2,990	
D	Overall height (to top of cab)	3,180		
E	Ground clearance of rear end*	1,050		
F	Ground clearance*	455		

Unit: mm

G	Tail swing radius	1,720	
H	Tumbler distance	SK260SRLC	3,850
		SK260SRNLC	3,850
I	Overall length of crawler	SK260SRLC	4,640
		SK260SRNLC	4,640
J	Track gauge	SK260SRLC	2,590
		SK260SRNLC	2,590
K	Shoe width	600/700/800	
L	Overall width of upperstructure	2,990	

* Without including height of shoe lug.

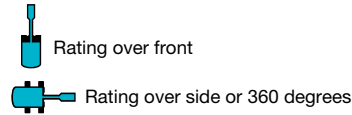
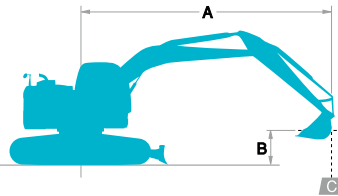


Operating Weight & Ground Pressure

In standard trim, with standard boom, 2.94 m arm, and 0.80 m³ ISO heaped bucket

Shaped	Shoe width	mm	Triple grouser shoes (even height)		
			600	700	800
Overall width of crawler	mm	SK260SRLC	3,190	3,290	3,390
		SK260SRNLC	2,990	3,090	3,190
Ground pressure	kPa	SK260SRLC	49	43	38
		SK260SRNLC	49	43	38
Operating weight	kg	SK260SRLC	24,900	25,200	25,400
		SK260SRNLC	24,800	25,100	25,400

Lifting Capacities



A – Reach from swing centerline for bucket hook
 B – Bucket hook height above/below ground
 C – Lifting capacities in kilograms
 * Max. discharge pressure: 34.3 MPa {350 kgf/cm²}

SK260SR ^{LC}		Arm: 2.94 m, Bucket: 0.8 m ³ ISO heaped 630 kg Shoe: 600 mm												
B	A	1.5 m		3.0 m		4.5 m		6.0 m		7.5 m		At Max. Reach		Radius
9.0 m	kg													4.46 m
7.5 m	kg					*4,880	*4,880	*3,490	*3,490			*3,340	*3,340	6.28 m
6.0 m	kg					*5,380	*5,380	*4,960	*4,960			*2,650	*2,650	7.36 m
4.5 m	kg			*7,460	*7,460	*6,420	*6,420	*5,360	5,130	*4,320	3,430	*2,650	*2,650	8.03 m
3.0 m	kg			*12,210	*12,210	*7,790	7,720	*5,960	4,820	*4,950	3,290	*2,790	2,690	8.38 m
1.5 m	kg			*7,140	*7,140	*8,940	7,060	*6,500	4,500	*5,160	3,130	*3,070	2,550	8.45 m
G.L.	kg			*7,940	*7,940	*9,300	6,650	*6,720	4,270	5,070	3,010	*3,560	2,590	8.25 m
-1.5 m	kg	*6,880	*6,880	*11,120	*11,120	*8,810	6,510	*6,450	4,160	*4,790	2,960	*4,450	2,820	7.76 m
-3.0 m	kg	*10,490	*10,490	*10,250	*10,250	*7,500	6,550	*5,480	4,180			*4,360	3,400	6.91 m
-4.5 m	kg			*6,720	*6,720	*5,070	*5,070					*3,790	*3,790	5.54 m

SK260SR ^{LC}		Arm: 2.94 m, Bucket: 0.8 m ³ ISO heaped 630 kg Shoe: 600 mm Additional Counterweight : 1,400 kg												
B	A	1.5 m		3.0 m		4.5 m		6.0 m		7.5 m		At Max. Reach		Radius
9.0 m	kg													4.46 m
7.5 m	kg					*4,860	*4,860	*3,470	*3,470			*3,320	*3,320	6.28 m
6.0 m	kg					*5,360	*5,360	*4,940	*4,940			*2,630	*2,630	7.36 m
4.5 m	kg			*7,440	*7,440	*6,400	*6,400	*5,340	*5,340	*4,300	3,960	*2,640	*2,640	8.03 m
3.0 m	kg			*12,190	*12,190	*7,770	*7,770	*5,940	5,510	*4,930	3,810	*2,770	*2,770	8.38 m
1.5 m	kg			*7,130	*7,130	*8,920	8,090	*6,480	5,200	*5,140	3,650	*3,050	3,000	8.45 m
G.L.	kg			*7,920	*7,920	*9,280	7,690	*6,700	4,960	*5,150	3,530	*3,540	3,050	8.25 m
-1.5 m	kg	*6,860	*6,860	*11,100	*11,100	*8,790	7,540	*6,430	4,850	*4,770	3,480	*4,430	3,320	7.76 m
-3.0 m	kg	*10,470	*10,470	*10,220	*10,220	*7,480	*7,480	*5,460	4,870			*4,340	3,980	6.91 m
-4.5 m	kg			*6,690	*6,690	*5,050	*5,050					*3,770	*3,770	5.54 m

SK260SR ^{NLC}		Arm: 2.94 m, Bucket: 0.8 m ³ ISO heaped 630 kg Shoe: 600 mm												
B	A	1.5 m		3.0 m		4.5 m		6.0 m		7.5 m		At Max. Reach		Radius
9.0 m	kg													4.46 m
7.5 m	kg					*4,880	*4,880	*3,490	*3,490			*3,340	*3,340	6.28 m
6.0 m	kg					*5,380	*5,380	*4,960	4,820			*2,650	*2,650	7.36 m
4.5 m	kg			*7,460	*7,460	*6,420	*6,420	*5,360	4,600	*4,320	3,060	*2,650	*2,650	8.03 m
3.0 m	kg			*12,210	*12,210	*7,790	6,870	*5,960	4,300	*4,950	2,920	*2,790	2,370	8.38 m
1.5 m	kg			*7,140	*7,140	*8,940	6,220	*6,500	3,990	*5,160	2,760	*3,070	2,240	8.45 m
G.L.	kg			*7,940	*7,940	*9,300	5,830	*6,720	3,760	5,030	2,640	*3,560	2,270	8.25 m
-1.5 m	kg	*6,880	*6,880	*11,120	*11,120	*8,810	5,690	*6,450	3,650	*4,790	2,590	*4,450	2,470	7.76 m
-3.0 m	kg	*10,490	*10,490	*10,250	*10,250	*7,500	5,730	*5,480	3,670			*4,360	2,990	6.91 m
-4.5 m	kg			*6,720	*6,720	*5,070	*5,070					*3,790	*3,790	5.54 m

- Notes:**
- Do not attempt to lift or hold any load that is greater than these lift capacities at their specified lift point radius and heights. Weight of all accessories must be deducted from the above lift capacities.
 - Lift capacities are based on machine standing on level, firm, and uniform ground. User must make allowance for job conditions such as soft or uneven ground, out of level conditions, side loads, sudden stopping of loads, hazardous conditions, experience of personnel, etc.
 - Bucket lift hook is defined as lift point.
 - The above lifting capacities are in compliance with SAE J/ISO 10567. They do not exceed 87 % of hydraulic lifting capacity or 75 % of tipping load. Lifting capacities marked with an asterisk (*) are limited by hydraulic capacity rather than tipping load.
 - Operator should be fully acquainted with the Operator's and Maintenance Instructions before operating this machine. Rules for safe operation of equipment should be adhered to at all times.
 - Lift capacities apply to only machines as originally manufactured and normally equipped by KOBELCO CONSTRUCTION MACHINERY CO., LTD.

Two Piece Boom Specification

Dimensions

Unit: mm



Working Ranges:

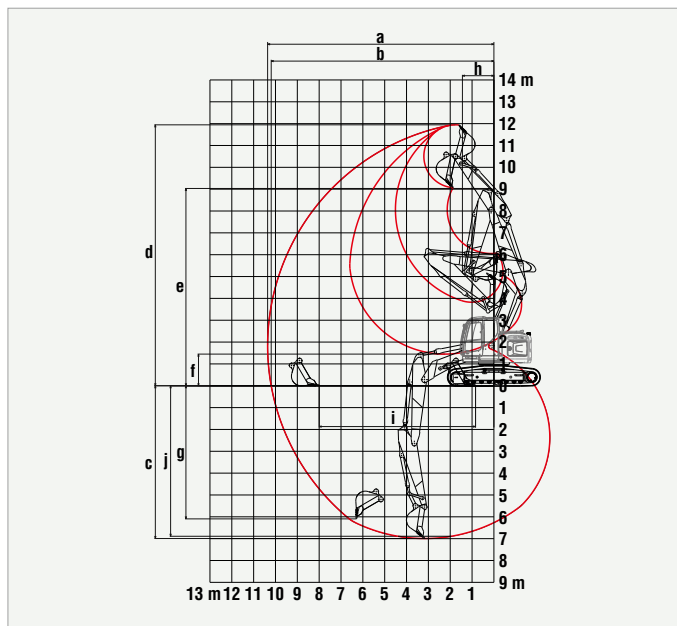
Unit: m

Boom		4.68 m
Range	Arm	2.94 m
a-	Max. digging reach	10.36
b-	Max. digging reach at ground level	10.20
c-	Max. digging depth	6.99
d-	Max. digging height	11.95
e-	Max. dumping clearance	9.07
f-	Min. dumping clearance	1.45
g-	Max. vertical wall digging depth	6.09
h-	Min. swing radius	1.44
Bucket capacity ISO heaped m ³		0.80

Operating Weight & Ground Pressure

In standard trim, two piece boom, 2.94 m arm, and 0.80 m³ ISO heaped bucket

Shaped		Triple grouser shoes (even height)			
Shoe width	mm	600	700	800	
Overall width of crawler	mm	SK260SR ^{LC}	3,190	3,290	3,390
		SK260SR ^{NLC}	2,990	3,090	3,190
Ground pressure	kPa (kgf/cm ²)	SK260SR ^{LC}	52	45	40
		SK260SR ^{NLC}	52	45	40
Operating weight	kg	SK260SR ^{LC}	26,000	26,300	26,600
		SK260SR ^{NLC}	26,000	26,300	26,600



Lifting Capacities

SK260SR ^{LC}		Arm: 2.94 m, Bucket: 0.8 m ³ ISO heaped 630 kg Shoe: 600 mm												
A	B	1.5 m		3.0 m		4.5 m		6.0 m		7.5 m		At Max. Reach		Radius
9.0 m	kg					*3,950	*3,950					*3,020	*3,020	5.31 m
7.5 m	kg					*5,050	*5,050	*3,170	*3,170			*2,580	*2,580	6.90 m
6.0 m	kg			*5,480	*5,480	*5,880	*5,880	*2,800	*2,800	*2,690	*2,690	*2,270	*2,270	7.90 m
4.5 m	kg			*10,880	*10,880	*7,410	*7,410	*2,470	*2,470	*2,820	*2,820	*2,140	*2,140	8.53 m
3.0 m	kg			*6,610	*6,610	*5,040	*5,040	*3,520	*3,520	*2,930	*2,930	*2,130	*2,130	8.86 m
1.5 m	kg	*8,890	*8,890	*10,650	*10,650	*6,820	6,520	*5,290	4,220	*3,280	2,930	*2,230	2,140	8.93 m
G.L.	kg	*10,600	*10,600	*5,570	*5,570	*8,270	6,060	*4,110	3,910	*3,880	2,750	*2,450	2,130	8.74m
-1.5 m	kg	*12,790	*12,790	*8,830	*8,830	*7,310	5,900	*5,560	3,760	*4,170	2,650	*2,870	2,280	8.27 m
-3.0 m	kg	*13,880	*13,880	*6,510	*6,510	*5,650	*5,650	*4,390	3,750			*3,050	2,690	7.48 m
-4.5 m	kg	*18,300	*18,300	*3,200	*3,200	*3,250	*3,250	*2,360	*2,360			*2,150	*2,150	6.24 m

SK260SR ^{NLC}		Arm: 2.94 m, Bucket: 0.8 m ³ ISO heaped 630 kg Shoe: 600 mm												
A	B	1.5 m		3.0 m		4.5 m		6.0 m		7.5 m		At Max. Reach		Radius
9.0 m	kg					*3,950	*3,950					*3,020	*3,020	5.31 m
7.5 m	kg					*5,050	*5,050	*3,170	*3,170			*2,580	*2,580	6.90 m
6.0 m	kg			*5,480	*5,480	*5,880	*5,880	*2,800	*2,800	*2,690	*2,690	*2,270	*2,270	7.90 m
4.5 m	kg			*10,880	*10,880	*7,410	*7,410	*2,470	*2,470	*2,820	*2,820	*2,140	*2,140	8.53 m
3.0 m	kg			*6,610	*6,610	*5,040	*5,040	*3,520	*3,520	*2,930	2,770	*2,130	1,980	8.86 m
1.5 m	kg	*8,890	*8,890	*10,650	10,440	*6,820	5,680	*5,290	3,690	*3,280	2,550	*2,230	1,840	8.93 m
G.L.	kg	*10,600	*10,600	*5,570	*5,570	*8,270	5,230	*4,110	3,390	*3,880	2,370	*2,450	1,820	8.74m
-1.5 m	kg	*12,790	*12,790	*8,830	*8,830	*7,310	5,080	*5,560	3,240	*4,170	2,280	*2,870	1,950	8.27 m
-3.0 m	kg	*13,880	*13,880	*6,510	*6,510	*5,650	5,120	*4,390	3,230			*3,050	2,310	7.48 m
-4.5 m	kg	*18,300	*18,300	*3,200	*3,200	*3,250	*3,250	*2,360	*2,360			*2,150	*2,150	6.24 m

SK260SR ^{LC}		Arm: 2.94 m, Bucket: 0.8 m ³ ISO heaped 630 kg Shoe: 600 mm Additional Counterweight: 1,400 kg												
A	B	1.5 m		3.0 m		4.5 m		6.0 m		7.5 m		At Max. Reach		Radius
9.0 m	kg					*3,950	*3,950					*3,020	*3,020	5.31 m
7.5 m	kg					*5,050	*5,050	*3,170	*3,170			2,700	2,700	6.90 m
6.0 m	kg			*5,480	*5,480	*5,880	*5,880	*2,800	*2,800	*2,690	*2,690	2,630	2,630	7.90 m
4.5 m	kg			*10,880	*10,880	*7,410	*7,410	*2,470	*2,470	*2,820	*2,820	2,690	2,690	8.53 m
3.0 m	kg			*6,610	*6,610	*5,040	*5,040	*3,520	*3,520	*2,930	2,930	2,860	2,720	8.86 m
1.5 m	kg	*8,890	*8,890	*10,650	10,650	*6,820	6,820	*5,290	4,930	*3,280	3,280	3,180	2,570	8.93 m
G.L.	kg	*10,600	*10,600	*5,570	*5,570	*8,270	7,110	*4,110	4,110	*3,880	3,290	3,720	2,570	8.74m
-1.5 m	kg	*12,790	*12,790	*8,830	*8,830	*7,310	6,960	*5,560	4,470	*4,170	3,190	3,470	2,760	8.27 m
-3.0 m	kg	*13,880	*13,880	*6,510	*6,510	*5,650	5,650	*4,390	4,390			*3,050	*3,050	7.48 m
-4.5 m	kg	*18,300	*18,300	*3,200	*3,200	*3,250	*3,250	*2,360	*2,360			*2,150	*2,150	6.24 m

STANDARD EQUIPMENT

ENGINE

- Engine, HINO J05E-TJ engine with turbocharger and intercooler
- Batteries (2 x12V – 92 Ah)
- Starting motor (24 V- 5 kW), 50 A alternator
- Automatic engine shut-down for low engine oil pressure
- Engine oil pan drain valve
- Double element air cleaner

CONTROL

- Working mode selector (H-mode, S-mode and ECO-mode)
- Power Boost

SWING SYSTEM & TRAVEL SYSTEM

- Swing rebound prevention system
- Straight propel system
- Two-speed travel with automatic shift down
- Sealed & lubricated track links
- Grease-type track adjusters
- Automatic swing brake

MIRRORS & LIGHTS

- Three rear view mirrors
- Three front working lights
- Rear view camera

CAB & CONTROL

- Two control levers, pilot-operated
- Horn, electric
- Integrated left-right slide-type control box
- Cab light (interior)
- Coat hook
- Luggage tray
- Large cup holder
- Detachable two-piece floor mat
- 7-way adjustable suspension seat
- Retractable seatbelt
- Headrest
- Handrails
- Heater and defroster
- Intermittent windshield wiper with double-spray washer
- Tinted safety glass
- Pull-type front window and removable lower front window
- Easy-to-read multi-display monitor
- Automatic air conditioner
- Emergency escape hammer
- Radio, AM/FM Stereo with speaker
- Gear pump
- Refueling pump
- Pressure release switch
- DPF switch

OPTIONAL EQUIPMENT

- Wide range of bucket
- Various optional arms
- Wide range of shoes
- Boom safety valve
- Front-guard protective structure (may interfere with bucket action)
- Object Handling Kit (boom safety valve + hook)
- Additional hydraulic circuit
- Extra piping
- Add-on type counterweight
- Cab additional light
- Air suspension seat
- Rain visor (may interfere with bucket action)

Note: standard and optional equipment may vary. Consult your KOBELCO dealer for specifics.

Note: This catalog may contain attachments and optional equipment that are not available in your area. And it may contain photographs of machines with specifications that differ from those of machines sold in your area. Please consult your nearest KOBELCO distributor for those items you may require. Due to our policy of continual product improvements all designs and specifications are subject to change without advance notice. Copyright by **KOBELCO CONSTRUCTION MACHINERY CO., LTD.** No part of this catalog may reproduced in any manner without notice.

KOBELCO CONSTRUCTION MACHINERY CO., LTD.

17-1, Higashigotanda 2-chome, Shinagawa-ku, Tokyo 141-8626 JAPAN
Tel: +81 (0) 3-5789-2146 Fax: +81 (0) 3-5789-2135
www.kobelco-kenki.co.jp/english_index.html

Inquiries To :